

Product Guide

Product Guide

ATLAS II



SENTRY
FROM SEARS SEATING

G2 PLUS
Suspension Seat



SEARS
SEATING

Table of Contents

Atlas II Seats..... 3

ActiveVRS Statistics..... 5

ActiveVRS..... 6

Atlas II LE Series..... 8

Atlas II DLX – Series, Thermassage 9

Atlas II DLX – Series..... 10

Atlas II PC Series 11

Sentry Seats..... 12

Optional Accessory Kits..... 14

The Fabriform® Story..... 15

C-2Plus Air Suspension® Seats 16

Seat Covering Selection Guide..... 18

Warranty Information..... 19



Atlas II Seats

Discover what makes new Atlas II from Sears Seating the “Best in Class” truck seats for today’s heavy duty market.

The Atlas II truck seat is a new, contemporary-styled truck seat designed to enhance comfort and improve performance.

Enhanced Comfort

Atlas II has a back support structure contoured to the natural shape of the spine and a contoured seat pan that provides full body support. Seat cushion foam has been enhanced to provide a new level of comfort for the operator.

Improved Adjustability

Atlas II has improved the adjustments of the seat by providing new “easier to operate” seat cushion tilt and seat cushion extension features. A new adjustable shock/damper system allows for a customized ride.

New “Comfort” Feature with the Operator in Mind

Atlas II has developed CVS (Cushion Ventilation System) that provides the operator a “COOL” seat. Thermassage is a heat/massage seat to relax away the aches of a long day of driving.

Unmatched Durability and Ride Performance

ToggleLink Air Suspension®

Sears Seating improved truck seating from the ground up with a new patented design based on driver feedback. The ToggleLink Suspension® delivers a better ride performance. Its internal end stops greatly reduce the chance of topping and bottoming, while the design’s superior lateral stability reduces side-to-side rocking.

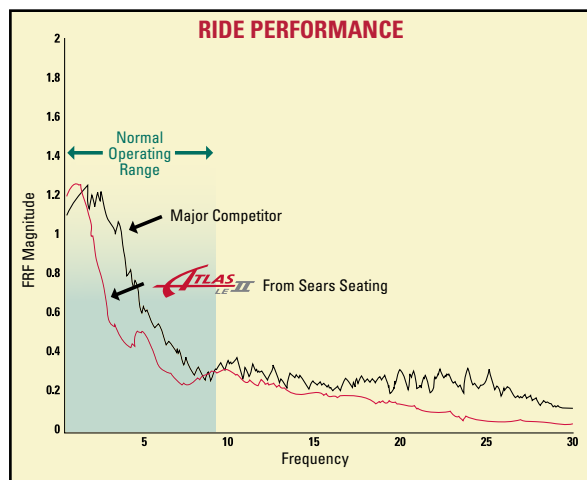
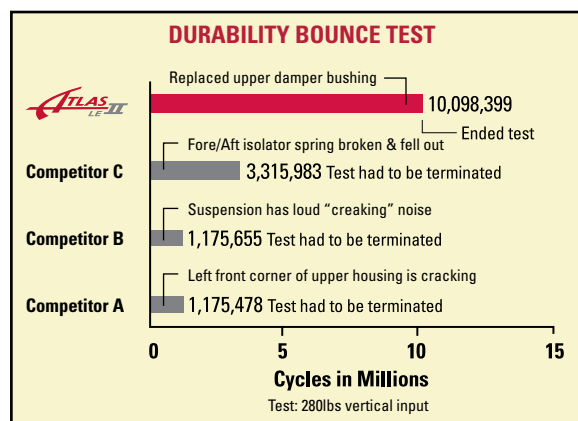
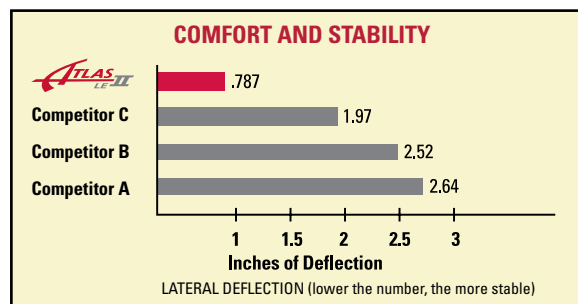
Atlas ToggleLink Suspension® also has fewer main wear points for longer service life.

Stabilizer Double-Locking Slides/Isolator

Sears added a double-locking slide/isolator package to further reduce vibration, eliminate torsion racking and greatly improve the ride. It allows for greater adjustability with 9” of fore/aft slide travel and a full two inches of smooth isolation.

Proof of Performance

Atlas was subjected to complete and rigorous durability testing. For the standard vertical bounce test, the seat carried a 280-pound weight for over 10 million vertical bounce cycles, while competition ranged from 1.7 million cycles to 3.3 million before failure.



Whole Body Vibration Study

University of Washington* conducted a study of whole body vibration (WBV) exposures in long-haul truck drivers. Full-shift (8-12 hrs.) WBV exposures were measured from 89 long-haul truck drivers as part of a baseline designed to evaluate different truck seats. The data were evaluated for important determinations of WBV exposures including trucking company, truck manufacturer and seat manufacturers.

Results: The Sears Atlas II truck seat had 57% less vibration transmitted to the operator on the vertical acceleration axis than the competitive truck seats. For the vector sum of all accelerations, the Sears Atlas II truck seat shows a 20% reduction in total WBV over the competitions’ seats.

When selecting truck seats for professional truck drivers, it may be important to understand that there are differences in the effectiveness of WBV exposure reduction between truck seat manufacturers.

*University of Washington Department of Environmental and Occupational Health Sciences



**Keep the drivers in
your fleet comfortable and
productive with quality seats
from Sears Seating.**



The University of Washington conducted a study of whole body vibration (WBV) exposures in long-haul truck drivers.

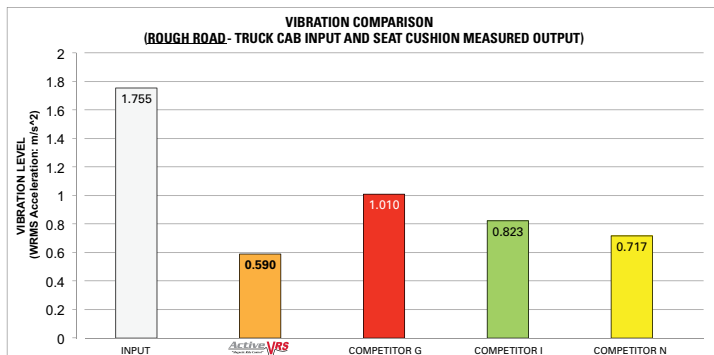
Results: The Sears Atlas II truck seat had 57% less vibration transmitted to the operator on the vertical acceleration axis than the competitive truck seats. For the vector sum of all accelerations, the Sears Atlas II truck seat shows a 20% reduction in total WBV over the competitive seats. **The Sears Atlas II ActiveVRS air suspension seat delivers improved vibration isolation over our Atlas II seat!**

Driver Recruitment and Retention

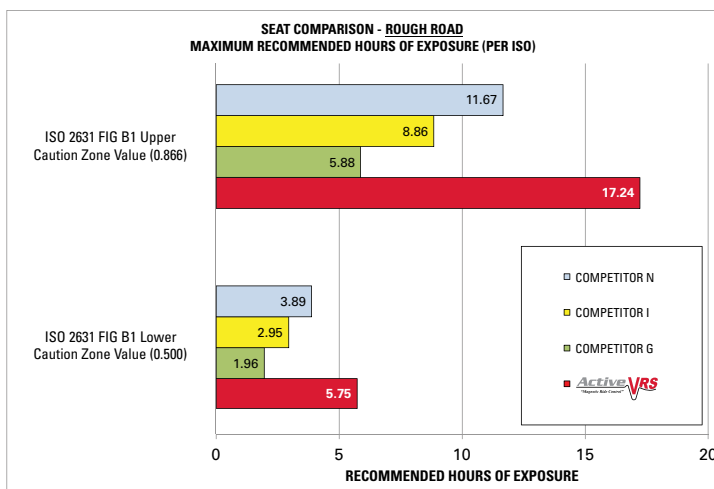
Having a Sears Atlas II ActiveVRS Magnetic Ride suspension seat in your cabs is a valuable driver recruitment tool and invaluable for driver retention. It can lower your drivers' exposure to WBV, resulting in reduced fatigue, more precise visual acuity, improved awareness of surroundings, faster response times and ultimately, improved driver health.

ActiveVRS Suspension Seat Offers:

- Improved vibration isolation, providing more comfort and less fatigue
- Active magnetic damper system utilizes controller with integrated position sensor to adjust stiffness of ride



Under rough road conditions, the Sears Atlas II ActiveVRS Magnetic Ride System delivers from 18% to 42% improved vibration isolation compared to the competition.



On a rough road and during a driver's normal eight (8) hour shift, the Sears Atlas II ActiveVRS Magnetic Ride System can lower the driver's exposure to WBV from 32%, up to 65% better than the competition.

Proven Performance and Driver Satisfaction

David F. – 6'2", 275 lbs.
Avg. daily hours in seat: 10
Currently using Sears Atlas

"The seat is easy to use and I never bottom out."

Brian M. – 5'11", 300 lbs.
Avg. daily hours in seat: 10
Currently using Competitor G

"Zero complaints about the ride with VRS. I'm not squirming around after four hours like I did with my old seat. Much better on my back and hips. No pain!"

John B. – 6'3", 375 lbs.
Avg. daily hours in seat: 10 - 12
Currently using Competitor G

"From controls to comfort, everything about the VRS is much better than my old seat. It's the first seat I've ever used that I haven't bottomed out on. This is way more comfortable than my last seat and I'm not as tired at the end of my shift."



ActiveVRS

"Magnetic Ride Control"

Reduce Exposure to WBV with the Sears Atlas II ActiveVRS Air Suspension Seat

The ActiveVRS Air suspension seat incorporates an active magnetic ride suspension system that greatly reduces vibrations to the operator versus normal passive air suspension seats.

The heart of the system consists of an active magnetic damper and a controller with an integrated position sensor.

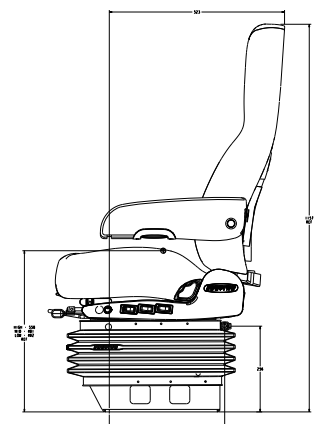
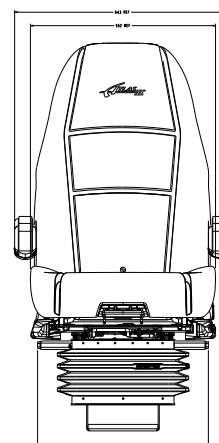
How It Works:

The ActiveVRS suspension also contains an air reservoir (tank) that lowers the natural frequency to reduce the vibrations, such as "chatter," you get when driving on a road.

The suspension is calibrated when it leaves the factory, as we know the top and bottom of the suspension stroke (travel). As the suspension reacts to vibration inputs, the accelerometer (position sensor) senses the position of the stroke 750 times/second in relation to the top and bottom and how fast it is moving.

The controller then sends an electrical charge to the active magnetic damper. This electrical charge creates a magnetic field within the damper where it reacts with the magnetorheological (MR) fluid in the damper itself. The MR fluid changes viscosity under this field and stiffens the ride, utilizing metal particles contained within the MR fluid.

Through our ride testing, the ActiveVRS Magnetic Ride suspension system reduces vibrations to the operator 45% better than a regular passive air suspension.



Standard Features:

Atlas ToggleLink ActiveVRS air suspension & boot

Atlas "Stabilizer" double locking slides w/9" travel & fore/aft isolator

Atlas Seat top with "Comfort Zone" Back Frame Structure

- Contoured metal seat pan
- Ergonomic 22" wide "luxury comfort" seat & back cushions
- Cut n' sew - with logo – Mordura cloth or Ultraleather
- High back only
- **ActiveVRS Damper System - Magnetic Ride**
- Seat cushion tilt - independent w/ 3 positions
- Seat cushion extension - independent w/ 3 positions
- Height adjustable Quad air lumbar system
- Recliner
- "New style" control pods & recliner handle
- Map pocket

Standard Colors	Leatherette*	Cloth/cloth*
Black	P4	PL
Gray	PU	PT
Blue	FE	FC
Burgundy	AA	A9
Tan	61	6R
Brown	N/A	6Q
Black with red insert	P5	PM
Black with gray insert	P6	PN
Black with tan insert	P7	PP
Black with blue insert	P8	PQ
Gray with black insert	PX	n/a
Gray with blue insert	PV	n/a
Gray with red insert	PW	n/a
Blue with gray insert	FF	FD

* Insert appropriate color code to complete seat part number

Description				Base Part Number
ActiveVRS	(no arms)	(Standard Riser)	Boot	2DF31**NBNSN
ActiveVRS	(no arms)	(Cascadia Riser)	Boot	2DH31**NBNSN
ActiveVRS	(no arms)	(M2/SD bracket)	Boot	2DK81**NBNSN
ActiveVRS	(no arms)	(Standard Riser)	Boot / heated cushions	2DG31**NBNSN
ActiveVRS	(no arms)	(Cascadia Riser)	Boot / heated cushions	2DJ31**NBNSN
ActiveVRS	(no arms)	(M2/SD bracket)	Boot / heated cushions	2DL81**NBNSN
ActiveVRS	(no arms)	(Volvo adapter)	Boot / heated cushions	VWG36**NBNSN
ActiveVRS	w/dual arms	(Standard Riser)	Boot	2DF11**BBNSN
ActiveVRS	w/dual arms	(Cascadia Riser)	Boot	2DH11**BBNSN
ActiveVRS	w/dual arms	(M2 / SD bracket)	Boot	2DK81**BBNSN
ActiveVRS	w/dual arms	(Standard Riser)	Boot / heated cushions	2DG11**BBNSN
ActiveVRS	w/dual arms	(Cascadia Riser)	Boot / heated cushions	2DJ11**BBNSN
ActiveVRS	w/dual arms	(M2 / SD bracket)	Boot / heated cushions	2DL81**BBNSN
ActiveVRS	w/dual arms	(Volvo adapter)	Boot / heated cushions	VWG16**BBNSN
ActiveVRS w/RH StowAway armrest & LH reg.armrest & molded boot				2DF11**3BNSN
ActiveVRS w/RH StowAway armrest & LH reg.armrest, heated cushions & molded boot				2DG11**3BNSN
ActiveVRS w/LH StowAway armrest & RH reg.armrest & molded boot				2DF11**4BNSN
ActiveVRS w/LH StowAway armrest & RH reg.armrest, heated cushions & molded boot				2DG11**4BNSN
CASCADIA RISERS				
ActiveVRS w/RH StowAway armrest & LH reg.armrest & molded boot				2DH31**3BNSN
ActiveVRS w/RH StowAway armrest & LH reg.armrest, heated cushions & molded boot				2DJ31**3BNSN
ActiveVRS w/LH StowAway armrest & RH reg.armrest & molded boot				2DH31**4BNSN
ActiveVRS w/LH StowAway armrest & RH reg.armrest, heated cushions & molded boot				2DJ31**4BNSN
VOLVO ADAPTER PLATE 3" RISERS				
ActiveVRS w/RH StowAway armrest & LH reg.armrest, heated cushions & molded boot				VWG36**3BNSN
ActiveVRS w/LH StowAway armrest & RH reg.armrest, heated cushions & molded boot				VWG36**4BNSN

Atlas II LE Series



Standard Features:

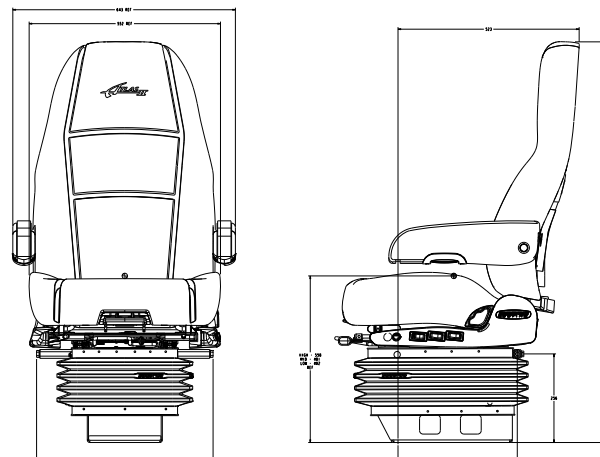
Atlas II ToggleLink Air Suspension® with flat floor riser

- Molded boot

Atlas II "stabilizer" double locking slides with 9" travel & fore/aft isolator

Atlas II seat top with "Comfort Zone" back frame structure

- Contoured metal seat pan
- Ergonomic 22" wide "luxury style" seat & back cushions
 - Cut n' sew with LE logo – Leatherette/cloth (3 choices)
- CVS Cushion Ventilation System – Heat n' vent cushions
- High-back only
- Seat cushion tilt – independent with 3 positions
- Seat cushion extension – independent with 3 positions
- Air lumbar system
- Recliner
- "New style" control pods & recliner handle
- Map pocket



Options:

- Adjustable Shock

Standard Colors	Color Code **
Black Leatherette with Asphalt Granite Cloth Insert	NC
Black Leatherette with Wheat Confetti Cloth Insert	NE
Gray Leatherette with Asphalt Granite Cloth Insert	NL

** Insert appropriate color code to complete seat part number

Description	Base Part Number
Standard (no arms)	2D934**NBNSN
Standard with dual armrests	2D914**BBNSN
Standard with RH StowAway armrest & LH regular armrest	2D914**3BNSN
Standard with LH StowAway armrest & RH regular armrest	2D914**4BNSN



Atlas II DLX – Series



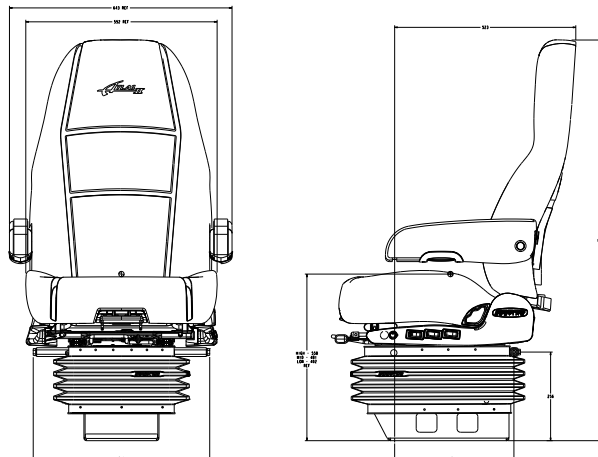
Standard Features:

Atlas II ToggleLink Air Suspension® with flat floor riser & molded boot

Atlas II “stabilizer” double locking slides with 9” travel & fore/aft isolator

Atlas II seat top with “Comfort Zone” back frame structure

- Contoured metal seat pan
- Ergonomic 22” wide “luxury comfort” seat & back cushions
 - Cut n’ sew – with logo – Mordura cloth or Leatherette
- High-back only
- **Heat/massage cushions**
- Seat cushion tilt – independent with 3 positions
- Seat cushion extension – independent with 3 positions
- Quad-chamber air lumbar – height adjustable
- Recliner
- “New style” control pods & recliner handle
- Map pocket



Options:

Adjustable Shock

Standard Colors	Leatherette*	Cloth/cloth*
Black	P4	PL
Gray	PU	PT
Blue	FE	FC
Burgundy	AA	A9
Tan	61	6R
Brown	N/A	6Q
Black with red insert	P5	PM
Black with gray insert	P6	PN
Black with tan insert	P7	PP
Black with blue insert	P8	PQ
Gray with black insert	PX	n/a
Gray with blue insert	PV	n/a
Gray with red insert	PW	n/a
Blue with gray insert	FF	FD

*Insert appropriate color code to complete seat part number



Description	Base Part Number
Standard (no arms)	2D531**NBNSN
Standard with dual armrests	2D511**BBNSN
Standard with RH StowAway armrest & LH regular armrest	2D511**3BNSN
Standard with LH StowAway armrest & RH regular armrest	2D511**4BNSN

Atlas II DLX – Series



Standard Features:

Atlas II ToggleLink Air Suspension® with flat floor riser & black vinyl skirt

Atlas II “stabilizer” double locking slides with 9” travel & fore/aft isolator

Atlas II seat top with “Comfort Zone” Back Frame Structure

- Contoured metal seat pan
- Ergonomic 22” wide “luxury comfort” seat & back cushions
 - Cut n’ sew with logo – Mordura cloth or Leatherette
- High-back only
- Seat cushion tilt – independent with 3 positions
- Seat cushion extension – independent with 3 positions
- Quad-chamber air lumbar – height adjustable
- Recliner
- “New style” control pods & recliner handle
- Map pocket

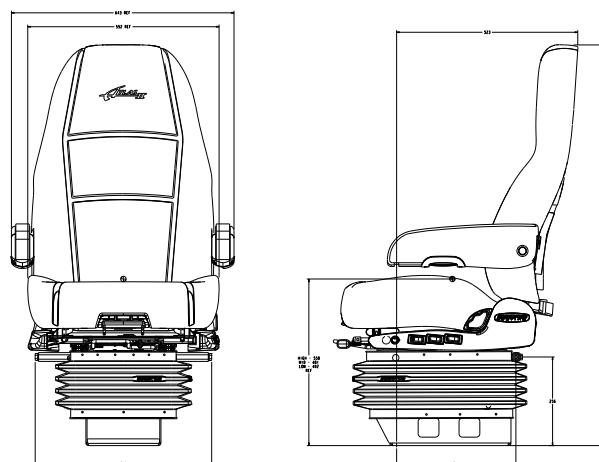
Options:

Adjustable Shock

Description: Arms	Base Part Number
Standard (no arms)	2D331**NSNSN
Standard (no arms) with molded boot	2D331**NBNSN
Standard (no arms) with heated cushions	2D431**NSNSN
Standard (no arms) with heated cushions & molded boot	2D431**NBNSN
Standard (dual arms)	2D311**BSNSN
Standard (dual arms) with molded boot	2D311**BBNSN
Standard (dual arms) with heated cushions	2D411**BSNSN
Standard (dual arms) with heated cushions & molded boot	2D411**BBNSN
Standard with RH StowAway armrest & LH regular armrest	2D311**3SNSN
Standard with RH StowAway armrest & LH regular armrest & molded boot	2D311**3BNSN
Standard with RH StowAway armrest & LH regular armrest & heated cushions	2D411**3SNSN
Standard with RH StowAway armrest & LH regular armrest, heated cushions & molded boot	2D411**3BNSN
Standard with LH StowAway armrest & RH regular armrest	2D311**4SNSN
Standard with LH StowAway armrest & RH regular armrest & molded boot	2D311**4BNSN
Standard with LH StowAway armrest & RH regular armrest & heated cushions	2D411**4SNSN
Standard with LH StowAway armrest & RH regular armrest, heated cushions & molded boot	2D411**4BNSN

Standard Colors	Leatherette*	Cloth/cloth*
Black	P4	PL
Gray	PU	PT
Blue	FE	FC
Burgundy	AA	A9
Tan	61	6R
Brown	N/A	6Q
Black with red insert	P5	PM
Black with gray insert	P6	PN
Black with tan insert	P7	PP
Black with blue insert	P8	PQ
Gray with black insert	PX	n/a
Gray with blue insert	PV	n/a
Gray with red insert	PW	n/a
Blue with gray insert	FF	FD

* Insert appropriate color code to complete seat part number



Atlas II PC Series



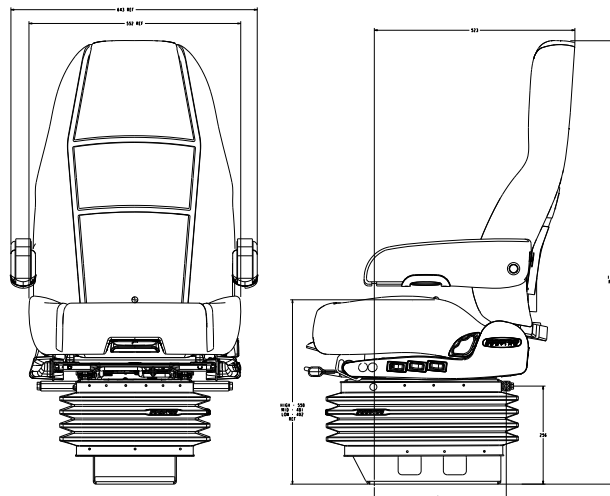
Standard Features:

Atlas II ToggleLink Air Suspension with flat floor riser

Atlas II "Stabilizer" double locking slides with 9" travel & fore/aft isolator

Atlas II seat top with Comfort Zone back frame structure

- Contoured metal seat pan
- Ergonomic 22" wide "luxury comfort" seat & back cushions
- Cut n' sew - Vinyl, Mordura cloth or Ultraleather (High-back only)
- Fabriform - cloth - High-back or mid-high back
- Integrated seat cushion tilt/extension - 3 positions
- Quad chamber air lumbar – height adjustable
- Recliner
- "New style" control pods and recliner handle



Options:

- Vinyl, Cloth or Leatherette Upholstery
- Vinyl suspension skirt
- Molded Boot
- Armrests

Standard Colors	Vinyl*	Cloth/Fabriform*	Leatherette*
Black	12	M0	X0
Gray	WS	M1	X1
Blue	J7	HQ	JE
Burgundy	D3	CF	D6
Tan	69	4F	6E
Brown	Not Available	4E	Not Available

* Insert appropriate color code to complete seat part number

Description		Base Part Number	
		Mid-high Back	High-Back
Standard (no arms)	NEW!	2DM38**NNNNN	2D231**NNNNN
Standard (no arms) with skirt	NEW!	2DM38**NSNNN	2D231**NSNNN
Standard (no arms) with molded boot	NEW!	2DM38**NBNNN	2D231**NBNNN
Standard (no arms)	Fabriform® only	2D633**NNNNN	2D832**NNNNN
Standard (no arms) with skirt	Fabriform® only	2D633**NSNNN	2D832**NSNNN
Standard (no arms) with molded boot	Fabriform® only	2D633**NBNNN	2D832**NBNNN
Standard (dual arms)	NEW!	2DM18**BNNNN	2D211**BNNNN
Standard (dual arms) with skirt	NEW!	2DM18**BSNNN	2D211**BSNNN
Standard (dual arms) with molded boot	NEW!	2DM18**BBNNN	2D211**BBNNN
Standard (dual arms)	Fabriform® only	2D613**BNNNN	2D812**BNNNN
Standard (dual arms) with skirt	Fabriform® only	2D613**BSNNN	2D812**BSNNN
Standard (dual arms) with molded boot	Fabriform® only	2D613**BBNNN	2D812**BBNNN



Sentry Seats

SENTRY
FROM SEARS SEATING

Now you have a value choice.

Sentry is a value line of truck seats that are designed to meet and exceed competition, as well as deliver quality, comfort and performance.

Sentry Leads the Competition in Advantages for Operator:

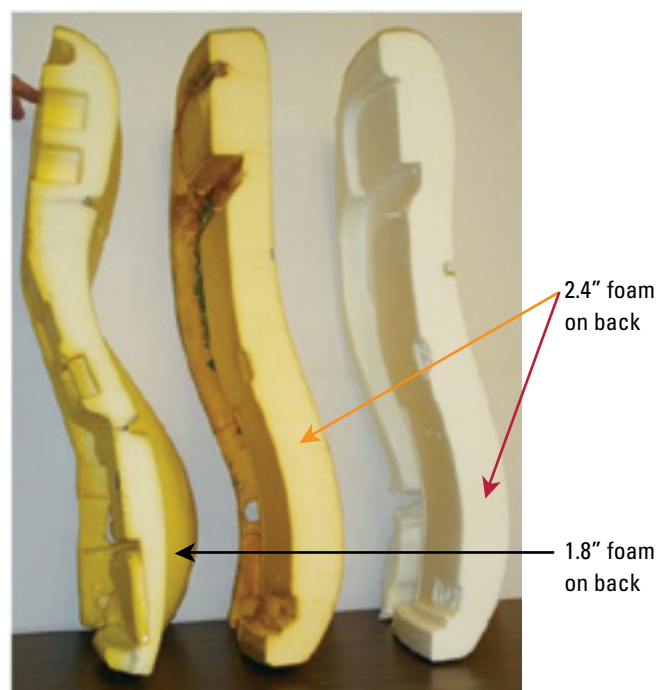
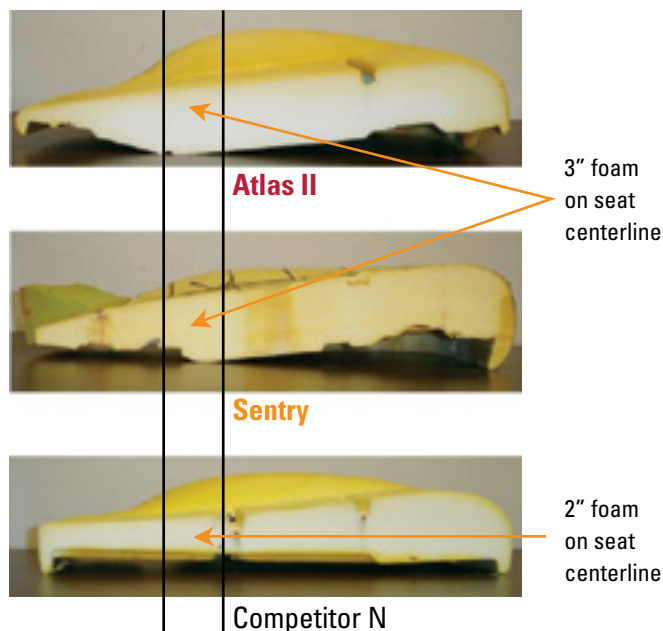
- Optimum size to fit all cabs.
- More foam in critical areas for greater comfort.
 - 3" of foam on seat cushion to provide better support for Ischia.
 - 2.4" of foam on back cushion centerline at lumbar area for better back support.
- Greater stability – no side-to-side rocking.
- Greater range of isolation.

Sentry ToggleLink Air Suspension®

Sentry utilizes Sears' patented ToggleLink Air Suspension® design that incorporates an integrated riser and internal end stops to reduce topping and bottoming, while it provides better quality ride performance for the value.

Sentry Proof of Performance

Sentry was subjected to the same Sears rigorous durability testing standards. Sentry carried a 280 pound weight for over 10 million cycles of the Sears' standard vertical bounce test.



Competitor N

Sentry

Atlas II

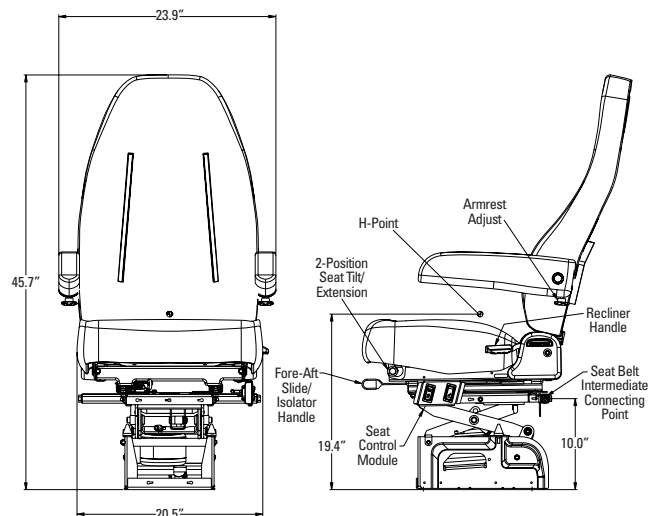
Standard Features:

Std. ToggleLink Air Suspension® with 6" travel & integrated riser
Single locking slides with 9" travel , isolator with 1.25" travel
Sentry seat top with contoured back frame structure

- Contoured seat pans
- Seat tilt and extension – integrated
- Air lumbar system
- High-back or Mid-high back seat
- Contoured 20.5" wide seat & back cushions and 3" of foam on centerline
- Full recliner

Standard Colors	Vinyl*	Cloth/Fabriform*
Black	12	M0
Gray	WS	M1
Blue	J7	HQ
Burgundy	D3	CF
Tan	69	4F
Brown	Not Available	4E
Asphalt	Not Available	02/1Z

Description	Base Part Number		
		Mid-high Back	High-Back
PACCAR, Mack, Daimler			
Standard (no arms)		1A232**NNNNN	1A131**NNNNN
Standard (no arms)	Fabriform®	1A434**NNNNN	1A333**NNNNN
Standard with dual armrests		1A212**BNNNN	1A111**BNNNN
Standard with dual armrests	Fabriform®	1A414**BNNNN	1A313**BNNNN
Navistar			
Standard (no arms)	ProStar Sleeper Cab	tbd	N1131**NNNNN
Standard with dual armrests	ProStar Sleeper Cab	tbd	N1111**BNNNN
Standard (no arms)	ProStar Day Cab	tbd	N1231**NNNNN
Standard with dual armrests	ProStar Day Cab	tbd	N1211**BNNNN
Daimler			
Standard (no arms)	M2*	n/a	52382**NNNNN
Standard with dual armrests	M2* *Available only -WS, M0, M1	n/a	52352**BNNNN
Standard (no arms)	Cascadia	n/a	52132**NNNNN
Standard with dual armrests	Cascadia	n/a	52112**BNNNN



Optional Accessory Kits

1. Armrest kits – Atlas II LE, DLX & PC
2. Vinyl suspension skirt kit
3. Floor mounting kits

SENTRY
FROM SEARS SEATING

ATLAS II

Standard Colors	Vinyl*	Cloth*	Leatherette*
Black	210	2NJ	2NP
Gray	2WQ	2NG	2NQ
Blue	2J5	2HH	2HM
Burgundy	2B0	2C6	2CC
Tan	267	25W	249
Brown	Not Available	25S	Not Available
Asphalt (70 Series only)	Not Available	A04	Not Available

*** Insert appropriate color code to complete armrest part number

Description	Base Part Number
Sentry Series	
Left Hand Armrest	SA31209.***
Right Hand Armrest	SA31208.***
70 & Elite 80 Series	
Left Hand Armrest	SA23909.***.901
Right Hand Armrest	SA23908.***.901
Elite 80 Series – MAG Pan	
Left Hand Armrest	SA23215.***.901
Right Hand Armrest	SA23216.***.901
70 & 80 Series – StowAway Armrest Kits	
Left Hand StowAway Armrest	SA23356.***
Right Hand StowAway Armrest	SA23355.***
Atlas II Series	
Left hand Armrest	SA35371.***.901
Right hand Armrest	SA35370.***.901
Atlas II Series - StowAway Armrest Kits	
Left Hand StowAway Armrest	SA35375.***.901
Right Hand StowAway Armrest	SA35374.***.901
Molded Suspension Boot kit - Atlas II only	SA35249.901

Vinyl Suspension Cover (Skirt) Kit (Atlas only)	SA18151.2x2.901
--------------------------------------------------------	------------------------

Seat Adapter Mounting Kits Atlas only	
Universal Mounting Adapter Plate Kit	SA23204
EzyRider Mounting Adapter Kit	SA23226
Daimler Cascadia Mounting/tether Kit	SA31231
Curved Floor Mounting Kit (Business Class)	SA18107.901
Curved Floor Mounting Kit (Freightliner M-2)	SA18106.901
International ProStar Mounting brackets/tether kit	SA35508
PACCAR Mounting Brackets/tether kit (Kenworth T680, Peterbilt 579)	SA35537
Volvo VN Mounting Kit	SA35183.145.901
Navistar NGV Adapter Plate for VRS	SA44272



Atlas II armrest



The Fabriform® Story

The old screwdriver-in-the-back-pocket abuse test barely leaves a mark.

Think how many times a day your operators are in and out of the cab. It adds up to hundreds of thousands of times over the life of your truck. And every time someone slides in or out, your seats can pay the price with wear and tear.

You won't have to worry about Sears seats with Fabriform® wearing out. They're made of a patented process that flamebonds a tri-laminate of film, foam and fabric.

The patented Fabriform® process involves flamebonding a rugged tri-laminate of film, foam and fabric. Poured into the fabric/ mold, the foam bonds with the tri-laminate fabric as it cures.

Superior wear resistance makes Fabriform® the ideal seat for regional, high delivery and vocational operations where drivers are in and out of the seat frequently.

The tri-laminate material provides a barrier of protection. Its "wicking" action disperses moisture and perspiration. The seats can be easily cleaned.

Unlike cut-n'-sew covers, Fabriform® cushions have no seams. This makes them impervious to dust, dirt and water – the major causes of cushion wear.



C-2Plus Air Suspension® Seats

Features	Advantage	Benefit
Air suspension w/ 5.25" travel	Meets H-Point with more suspension stroke vs standard seats	Better ride
Thicker ergonomic contoured molded cushions one (1) inch more foam, flattened bolster area	Provides a greater surface area to displace operators' weight resulting in more comfort. Molded fabric (FAB) provides exceptional durability vs cut n' sew covers	More comfort & support Extremely durable Easy to clean
Optional air lumbar support	Provides greater support for spine & back	Additional comfort
Quick attach seat and back cushions	Provides easy replacement vs cut and sew	Ease of service

***NEW! C-2Plus Air Suspension Seats
from Sears Seating. NOW EVEN BETTER.***





Standard Features:

C-2Plus Air Suspension®

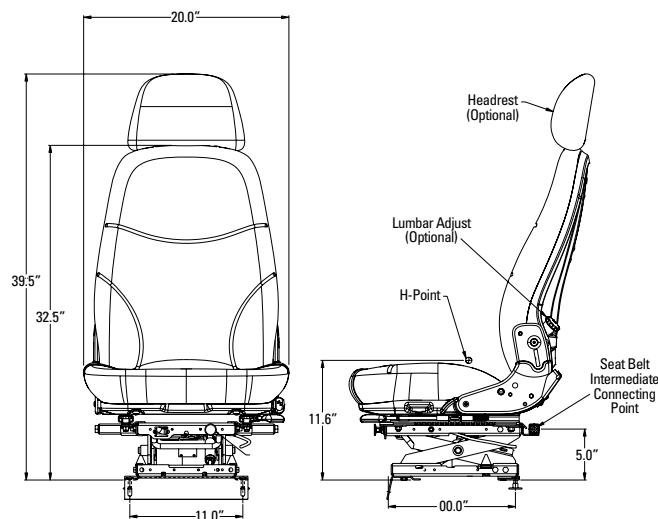
- Suspension travel – 5.25"
- Fore/aft slides – 7" travel
- Shock absorber

C-2Plus seat top

- Contoured metal seat & back pans
- Ergonomic contoured cushions – 20" wide
- **One inch thicker foam – 5 1/8 inch thick**
 - Patented Fabriform® process (cloth) – Asphalt
 - Molded vinyl
- Recliner

Options:

- Armrests
- Molded boot
- Air lumbar
- Mounting/tether bar kits
- Dual shock suspension



Description	Colors	Part Number
Standard (no arms) – <i>Mechanical Lumbar</i>	Black vinyl	1C1211PNNNNN
Standard (no arms) – <i>Mechanical/Lumbar</i>	FAB cloth	1C1210YNNNNN
Standard (no arms) – <i>Fixed Lumbar</i>	Black vinyl	1C3211PNNNNN
Standard (no arms) – <i>Fixed Lumbar</i>	FAB cloth	1C3210YNNNNN
Standard (no arms) - <i>Air Lumbar</i>	Black vinyl	1CE211PNNNNN
Standard (no arms) - <i>Air Lumbar</i>	FAB cloth	1CE210YNNNNN
Standard (no arms) - <i>Air lumbar/Dual shock</i>	Black vinyl	1CN211PNNNNN
Standard (no arms) - <i>Air lumbar/Dual shock</i>	FAB	1CN210YNNNNN

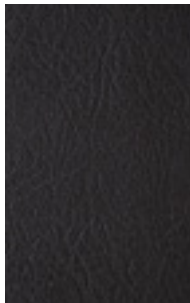
Description	Part Number
Mounting bracket & tether kits	
Mack MR	SA35012
Mack LE	SA35013
Peterbilt 320	SA35014
Autocar (Driver)	SA35015
Daimler – M2	SA35020
Crane Carrier – Tether only	SA35017

Options	Colors	Part Number
RH Armrest Kit		SA22990.901
LH Armrest Kit		SA22991.901
Molded Boot		SA31332

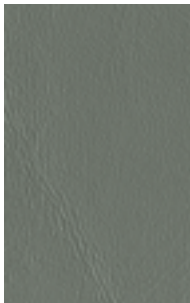


Seat Covering Selection Guide

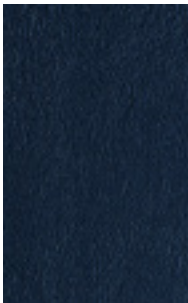
VINYL



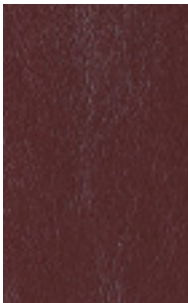
Black



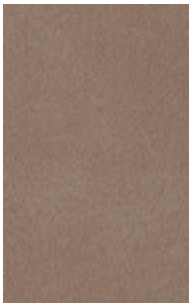
Gray



Blue

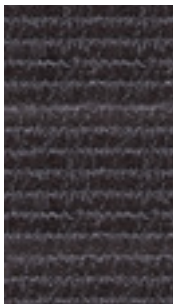


Burgundy

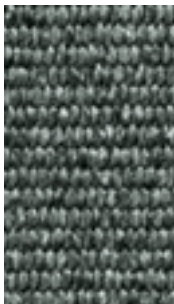


Tan

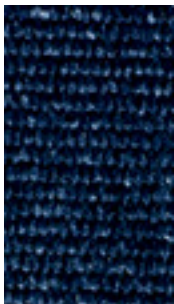
CLOTH/FABRIFORM®



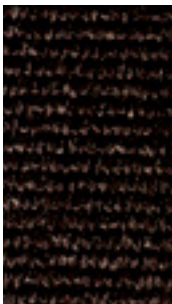
Black



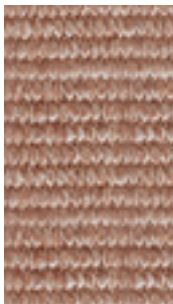
Gray



Blue



Burgundy



Tan

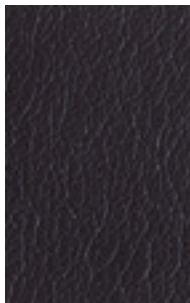


Brown

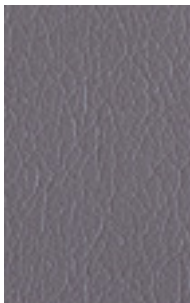


Asphalt

LEATHERETTE



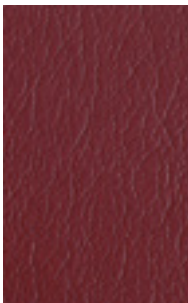
Black



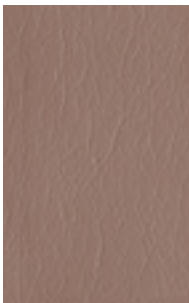
Gray



Blue



Burgundy



Tan

Warranty Information

ATLAS II AND SENTRY SERIES 5 YEARS/UNLIMITED MILES LIMITED WARRANTY—NON PRO-RATED 3 YEARS/UNLIMITED MILES—FABRIFORM CUSHION

Sears Seating expressly warrants, to the original purchaser, that all structural seat components in the **Atlas II and Sentry Series** Suspension seats shall be free from defects in material and workmanship for five (5) years from date-of-purchase provided such seats are subject to normal use and receive proper maintenance. Sears Seating expressly warrants that each seat shall be free of defects in materials and workmanship, and that the cushions and seat covers (excluding Fabriform® cushions) shall be free from defectively sewn seams for a period of one (1) year or 100,000 miles, whichever comes first, excluding normal wear and tear. **Fabriform® cushions** shall be free from defects in material for a period of three (3) years, excluding normal wear and tear—both from date-of-purchase.

Your sole and exclusive remedy against Sears Seating arising from the purchase or use of the aforementioned suspension seats is limited to repair or replacement of defective materials or defective workmanship, after verification by Sears Seating. During the first year or 100,000 miles, whichever comes first, Sears Seating will reimburse the purchaser for labor incurred for removal and replacement of defective parts based on Sears Seating's warranty rate chart. Repairs will be preformed at authorized repair facilities.

These warranties do not apply to broken valve stems or to valve failure due to foreign matter in the air valves and air system.

These warranties will become null and void if:

- The seat has been subjected to abuse, neglect or accident.
- The seat has been altered, modified, changed or reworked in a manner not previously authorized by Sears Seating.
- The seat is installed in a manner that would subject it to abnormal wear.
- Recommended maintenance is not followed.
- Damage to the cushions and covers caused by cuts, burns or abuses.

WARRANTY DISCLAIMERS AND LIMITATIONS OF LIABILITY

THE ABOVE EXPRESSED WARRANTY SHALL BE THE EXCLUSIVE WARRANTY, AND SEARS SEATING MAKES NO OTHER WARRANTIES, EXPRESSED OR IMPLIED. SEARS SEATING EXPRESSLY DISCLAIMS ANY IMPLIED WARRANTIES OF MERCHANTABILITY AND IMPLIED WARRANTIES OF FITNESS FOR A PARTICULAR PURPOSE.

IT IS AGREED THAT SEARS SEATING SHALL NOT BE LIABLE FOR INCIDENTAL OR CONSEQUENTIAL DAMAGES, including, but not limited to, loss of income, loss of use, lost profits, damage to other property, the cost of removing and reinstalling aforementioned suspension seats, attorney's fees and any liability you may have with respect to any other person.

For other details on our warranty policy, contact your Sears Seating representative or Sears Seating Customer Service. **800-553-3013**

SEARS C-2 SERIES FABRIFORM® 2 YEARS/2 YEARS LIMITED WARRANTY—NON PRO-RATED

Sears Seating expressly warrants, to the original purchaser, that all structural seat components in the C-2 Series Suspension seats with Fabriform® cushions shall be free from defects in material and workmanship for two (2) years from date-of-purchase provided such seats are subject to normal use and receive proper maintenance. Sears Seating also expressly warrants that the Fabriform® cushions shall be free from defects in materials for a period of two (2) years, excluding normal wear and tear.

Your sole and exclusive remedy against Sears Seating arising from the purchase or use of the aforementioned suspension seats is limited to repair or replacement of defective materials or defective workmanship, after verification by Sears Seating. During the first year or 100,000 miles, whichever comes first, Sears Seating will reimburse the purchaser for labor incurred for removal and replacement of defective parts based on Sears Seating's warranty rate chart. Repairs will be preformed at authorized repair facilities.

These warranties do not apply to broken valve stems or to valve failure due to foreign matter in the air valves and air system.

These warranties will become null and void if:

- The seat has been subjected to abuse, neglect or accident.
- The seat has been altered, modified, changed or reworked in a manner not previously authorized by Sears Seating.
- The seat is installed in a manner that would subject it to abnormal wear.
- Recommended maintenance is not followed.
- Damage to the cushions and covers caused by cuts, burns or abuses.

WARRANTY DISCLAIMERS AND LIMITATIONS OF LIABILITY

THE ABOVE EXPRESSED WARRANTY SHALL BE THE EXCLUSIVE WARRANTY, AND SEARS SEATING MAKES NO OTHER WARRANTIES, EXPRESSED OR IMPLIED. SEARS SEATING EXPRESSLY DISCLAIMS ANY IMPLIED WARRANTIES OF MERCHANTABILITY AND IMPLIED WARRANTIES OF FITNESS FOR A PARTICULAR PURPOSE.

IT IS AGREED THAT SEARS SEATING SHALL NOT BE LIABLE FOR INCIDENTAL OR CONSEQUENTIAL DAMAGES, including, but not limited to, loss of income, loss of use, lost profits, damage to other property, the cost of removing and reinstalling aforementioned suspension seats, attorney's fees and any liability you may have with respect to any other person.

For other details on our warranty policy, contact your Sears Seating representative or Sears Seating Customer Service. **800-553-3013**

WARNING: Serious injury may occur if head clearance is not adequate. After installing seat and before riding or driving vehicle, ensure that there is adequate head clearance at maximum upward travel of seat. While sitting in seat, slowly raise the seat to its maximum height by actuating the suspension air control valve.

For normal seat operations, adjust seat to proper ride height by actuating the suspension air control valve to raise or lower the seat to a comfortable ride height.

Seat belts should be worn at all times by driver and passenger when operating the vehicle.

This seat conforms to Federal motor vehicle safety standards 207 and 302 as in effect at the time of manufacture when correct mounting hardware and tether belts are used.

It is the responsibility of the installer to ensure that proper seat mounting hardware and mounting channels (when required) and seat belt and tether belt anchorages are used according to requirements of Federal motor vehicle safety standards. Use only high strength fasteners and heavy duty washers and tether belts when installing the seat assembly.

To avoid possible injury and equipment damage and to prolong the life of the seat it is necessary to keep the seat suspension free of debris and foreign material.



P.O. Box 3667 | Davenport, IA 52808
Phone: 800 553 3013 Fax: 563 383 2819 | www.searsseating.com
©2019 Sears Manufacturing Company