

**SEARS**  
SEATING



**Off-Road Seating Selection Guide**



**SEARS**  
SEATING

**We make the world's best seats.**

**1407**



**3030**



**5027**



**COMPACT MECHANICAL**



**KEY CHARACTERISTICS**

Application	AG /CE light duty
Suspension Linkage	Scissors w/rollers
Total suspension stroke	130mm
SIP Height	131mm
Operator weight range	50Kg - 125Kg
Mounting Pattern	140mm x 160mm
ISO 7096 Compliance	EM9
ISO 5007 Compliance	Class I, II & III

**OPTIONS**

- Single non-adjustable shock
- Fore/aft Isolators
- Lateral isolators
- Single locking roller slide packages
- Double locking roller slide packages
- +/- 25 degrees swivel

**AVAILABLE SEAT TOPS**

- 1000 Series**
- 1400 Series**
- 3000 Series**

**COMPACT AIR**



**KEY CHARACTERISTICS**

Application	AG /CE light duty
Suspension Linkage	Scissors w/rollers
Total suspension stroke	130mm
SIP Height	132mm
Operator weight range	45Kg - 130Kg
Mounting Pattern	240.3mm x 104.0mm
ISO 7096 Compliance	EM9
ISO 5007 Compliance	Class I, II & III

**OPTIONS**

- 12V or 24V Compressor
- Single non-adjustable shock
- Fore/aft Isolators
- Lateral isolators
- Single locking roller slide packages
- Double locking roller slide packages
- Single bolt 180 degrees swivel
- +/- 25 degrees swivel

**AVAILABLE SEAT TOPS**

- 1000 Series**
- 1400 Series**
- 3000 Series**
- 5000 Series**

**GUARDIAN MECHANICAL**



**KEY CHARACTERISTICS**

Application	AG /CE medium duty
Suspension Linkage	Scissors w/sliders
Total suspension stroke	127mm
SIP Height	141mm
Operator weight range	50Kg - 130Kg
Mounting Pattern	254mm x 252mm

**OPTIONS**

- Single non-adjustable shock
- Single locking roller slide packages
- Double locking roller slide packages
- HD puck slide packages
- single bolt 180 degree swivel
- +/- 25 degrees swivel

**AVAILABLE SEAT TOPS**

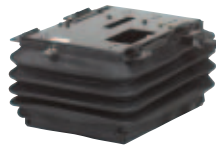
- 3000 Series**
- 5000 Series**
- 8000 Series**

**D5025****3045****5060****DELUXE MECHANICAL****KEY CHARACTERISTICS**

<b>Application</b>	CE heavy duty
<b>Suspension Linkage</b>	Scissors w/rollers
<b>Total suspension stroke</b>	174mm
<b>SIP Height</b>	178mm
<b>Operator weight range</b>	50Kg - 130Kg
<b>Mounting Pattern</b>	279mm x 235mm

**OPTIONS**

- Single non-adjustable shock
- Single adjustable shock
- Single locking roller slide packages
- Double locking roller slide packages
- HD puck slide packages
- single bolt 180 degree swivel
- +/- 25 degrees swivel

**LP AIR****KEY CHARACTERISTICS**

<b>Application</b>	AG /CE medium duty
<b>Suspension Linkage</b>	Scissors w/rollers
<b>Total suspension stroke</b>	150mm
<b>SIP Height</b>	162mm
<b>Operator weight range</b>	45Kg - 130Kg
<b>Mounting Pattern</b>	234.9mm x341.3mm
<b>ISO 5007 Compliance</b>	Class I, II & III

**OPTIONS**

- 12V or 24V Compressor
- Single non-adjustable shock
- Single adjustable shock
- Fore/aft Isolators
- Lateral isolators
- Single locking roller slide packages
- Double locking roller slide packages
- Single bolt 180 degrees swivel
- +/- 25 degrees swivel

**AIR 2000****KEY CHARACTERISTICS**

<b>Application</b>	AG medium duty
<b>Suspension Linkage</b>	Scissors w/rollers
<b>Total suspension stroke</b>	155mm or 178mm
<b>SIP Height</b>	193mm or 204mm
<b>Operator weight range</b>	45Kg - 140Kg
<b>Mounting Pattern</b>	309mm x 381mm
<b>ISO 5007 Compliance</b>	Class III

**OPTIONS**

- 12V or 24V Compressor
- Single adjustable shock
- Fore/aft Isolators
- Lateral isolators
- Single locking roller slide packages
- Double locking roller slide packages
- +/- 25 degrees swivel

**AVAILABLE SEAT TOPS**

**3000 Series**  
**5000 Series**  
**8000 Series**

**AVAILABLE SEAT TOPS**

**3000 Series**  
**5000 Series**  
**8000 Series**

**AVAILABLE SEAT TOPS**

**5000 Series**

**D8052**



**8070**



**D5080**



**CE AIR**



**KEY CHARACTERISTICS**

Application	CE medium/heavy duty
Suspension Linkage	Scissors w/rollers
Total suspension stroke	166mm
SIP Height	170mm
Operator weight range	50Kg - 140Kg
Mounting Pattern	275mm x 235mm
ISO 7096 Compliance	EM1, EM3, EM6

**OPTIONS**

- 12V or 24V Compressor
- Single non-adjustable shock
- Single adjustable shock
- Dual n/a & adj shock
- Fore/aft Isolators
- Double locking roller slide packages
- HD puck slide packages

**AVAILABLE SEAT TOPS**

- 3000 Series**
- 5000 Series**
- 8000 Series**

**TLV AIR**



**KEY CHARACTERISTICS**

Application	AG /CE heavy duty
Suspension Linkage	Scissors w/toggles
Total suspension stroke	152mm or 178mm
SIP Height	163mm or 176mm
Operator weight range	45Kg - 140Kg
Mounting Pattern	400mm x 381.7mm
ISO 7096 Compliance	EM1, EM3-EM6
ISO 5007 Compliance	Class III

**OPTIONS**

- 12V or 24V Compressor
- Single non-adjustable shock
- Single adjustable shock
- Dual n/a & adj shock
- Fore/aft Isolators
- Lateral isolators
- Single locking roller slide packages
- Double locking roller slide packages
- +/- 25 degrees swivel

**AVAILABLE SEAT TOPS**

- 5000 Series**
- 8000 Series**

**VRS SEMI-ACTIVE AIR 2000**



**KEY CHARACTERISTICS**

Application	AG/CE medium duty
Suspension Linkage	Scissors w/rollers
Dampening	Semi-Active Shock system
Total suspension stroke	155mm or 178mm
SIP Height	193mm or 204mm
Operator weight range	45Kg - 140Kg
Mounting Pattern	309mm x 381mm
ISO 5007 Compliance	Class III

**OPTIONS**

- 12V or 24V Compressor
- Fore/aft Isolators
- Lateral isolators
- HD puck slide package
- +/- 25 degrees swivel

**AVAILABLE SEAT TOPS**

- 5000 Series**
- 8000 Series**



### 1000 Super Suburban

#### Standard features

Stamped metal pan  
One piece cushion  
Protective edge trim

#### Options

Vinyl or cloth  
armrests - tilt-up  
seat belts

### 1400 Hi-Back

#### Standard features

Stamped metal pan  
One piece cushion  
Protective edge trim

#### Options

Vinyl or cloth  
armrests - tilt-up  
seat belts

### 3000 C2

#### Standard features

Contoured metal seat & back pans  
Ergonomic contoured comfort cushions  
• available in 2 widths (482mm, 508mm)  
• Fold flat back rest  
Recliner  
Mechanical lumbar

#### Deluxe Features

Seat angle adjust  
Seat extension adjust  
Upper back rest

#### Options

Vinyl or cloth  
Height adjustable armrests - tilt-up  
Height adjustable armrests  
- tilt-up & angle adj.  
seat belts

### 5000 SST

#### Standard features

Contoured metal seat & back pans  
Ergonomic contoured comfort cushions  
Recliner  
Mechanical lumbar

#### Deluxe Features

Seat angle adjust  
Seat extension adjust  
Upper back rest

#### Options

Vinyl or cloth  
Height adjustable armrests - tilt-up  
Height adjustable armrests  
- tilt-up & angle adj.  
seat belts



### 8000 Hi-Back SST

#### Standard features

Contoured metal seat & back pans  
• High back rest  
Ergonomic contoured comfort cushions  
Recliner  
Mechanical lumbar

#### Deluxe Features

Seat angle adjust  
Seat extension adjust  
Articulating upper back rest

#### Options

Vinyl or cloth  
Height adjustable armrests - tilt-up  
Height adjustable armrests  
- tilt-up & angle adj.  
seat belts



	07 Compact Mechanical	30 Compact Air	27 Guardian Mechanical	25 Deluxe Mechanical	45 Low Profile Air	60 Air 2000	52 CE Air	70 TLV Air	80 VRS Semi- Active Air 200
<b>1000</b>	1007	1030							
<b>1400</b>	1407	1430							
<b>3000</b>	3007	3030	3027	3025	3045		3052		
<b>5000</b>		D5030	D5027	D5025	D5045	D5060	D5052	D5070	D5080
<b>8000</b>			8027	8025	8045		8052	8070	8080

**1855**

Established in Davenport, Iowa. Produced harnesses, saddles and leather goods for the agricultural industry.



## Innovation made Sears a world leader.

The year was 1855, some six years before the American Civil War. Isaac Howe Sears began manufacturing quality leather and canvas goods for agricultural markets in Davenport, Iowa.



**1947**

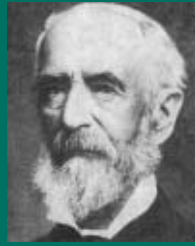
Began producing agricultural and industrial seats.



The company grew through five family generations. Along the way, it established an enviable reputation for innovation. In 1967, for example, it introduced the first mechanical suspension for tractor seats. Sears has remained the leader in suspension seating ever since.

**1965**

Introduced first mechanical suspension for the agricultural market.



The company diversified into state-of-the-art truck seating in 1981. Today, Sears is a global company and world leader in seats for the agriculture, construction, industrial and heavy-duty truck markets. Through technological advances, it has become synonymous with quality, durability, reliability and comfort.

**1976**

Expanded internationally with Sears Europe in UK.



### Breakthroughs in durability and comfort.

Innovations include seamless, waterproof cushions made through the FabriForm® flame-bonding process. Fabriform material will not tear, even if punctured by a sharp object, and is impervious to dust, dirt and water resulting in longer cushion life.

**1981**

Expanded into heavy-duty truck seating market.



Unsurpassed driver comfort has been obtained through extensive ergonomic analysis involving the pressure mapping of nearly 200 drivers and testing on a six-axis ride simulator. This research is instrumental in determining the correct cushion contours, seat dimensions, and control locations to fit the application.

**1994**

Expanded facilities in Davenport with new mechanical center to house six-axis ride simulator and new test equipment.



Sears innovation also includes a VRS (Vibration Reduction System) air suspension. This semi-active system is 45% better at reducing vibration than passive air suspension seats. It works through fluid that electromagnetically changes viscosity to dampen vibrations as they are encountered.

**2005**

Additional 50,000 square feet at main plant in Davenport.



As Sears' commitment to innovation continues, the company holds over 60 patents and proudly maintains its international ISO9001 registration.

ISO-9001:2000

